

Vacuum lifter

Series M3A

 **Kg max**
2000

AIR Power supply
Compressed Air



The M3A is a series of Vacuum Lifters which contains a wide range of 3-plate models with capacities ranging from 375 kg to 2000 kg. The M3A series is compressed air powered. The **manual tilting system** allows a vertical – horizontal movement and vice versa. The maximum capacity of the lift depends on the size of the suction plates. This lifter is very versatile, by excluding the side plates by turning off a tap on the lifter's frame, it is possible to **use only the central plate** that allows you to lift small items.

It is equipped with an **audio-visual alarm** control unit that warns the operator of possible dangerous situations. The vacuum gauge with coloured scale allows constant control of the vacuum level reached. It is present a **filtering system** for dust and condensation.



Horizontal lifting



3 suction pads



Vertical lifting



Max capacity 2000 kg



Manual tilt 0-90°



Safety devices

CE

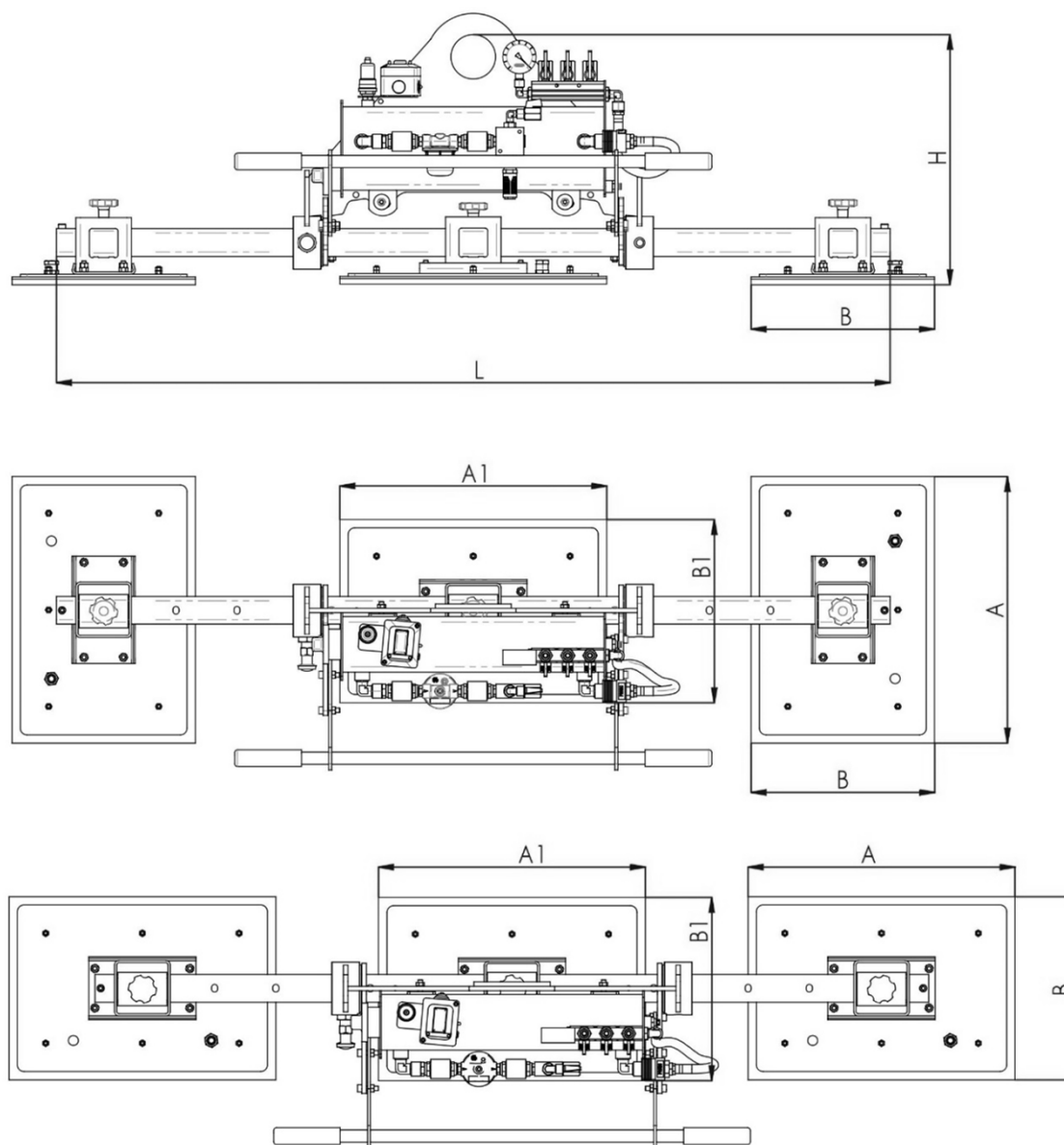
made in
ITALY

Technical specification

Application	Marble and granite slabs - not porous materials
Lifting capacity	Models up to 2000 kg
Suction pads	Nr. 3 suction pad
Load movement	Manual tilt 0-90°
Operating system	Compressed air
Vacuum system	Vacuum circuit, complete of vacuum reserve and non return valve
Control	Manual valve on the lifter's frame Release of the load by dual action security command
Standard features	On-off double sliding valve with safety Audible and visual low vacuum warning devices Vacuum gauge with colored scale, vacuum filter, non return valves
Optional	White gaskets Holder for hoist command

Vacuum lifter

Technical drawings



M3A series

 **Kg max 1500**

Product code	Lifting capacity (kg)	Central pad A1 x B1 (mm)	Lateral pads A x B (mm)	H (mm)	Own weight (kg)
M3A 375	375	480 x 230	480 x 230	450	61
M3A 625	625	480 x 230	480 x 330	450	65
M3A 750	750	480 x 330	480 x 330	450	80
M3A 1000	1000	630 x 330	630 x 330	450	86
M3A 1200	1200	630 x 280	630 x 280	450	105
M3A 1500	1500	630 x 430	630 x 430	450	120
M3A 2000	2000	830 x 480	830 x 480	450	147

L = 1500 mm; on request different length