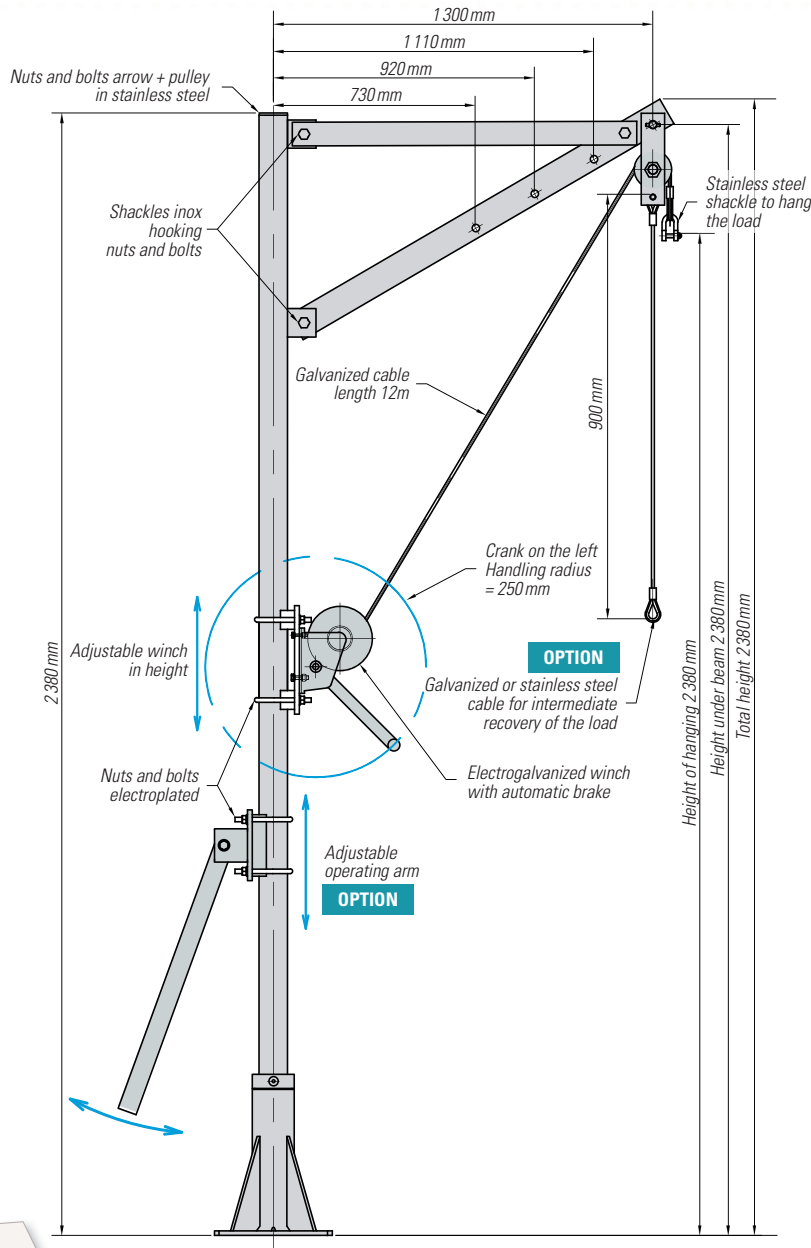


PAA 75 / 1.3

STEEL DAVIT CRANE 75 KG

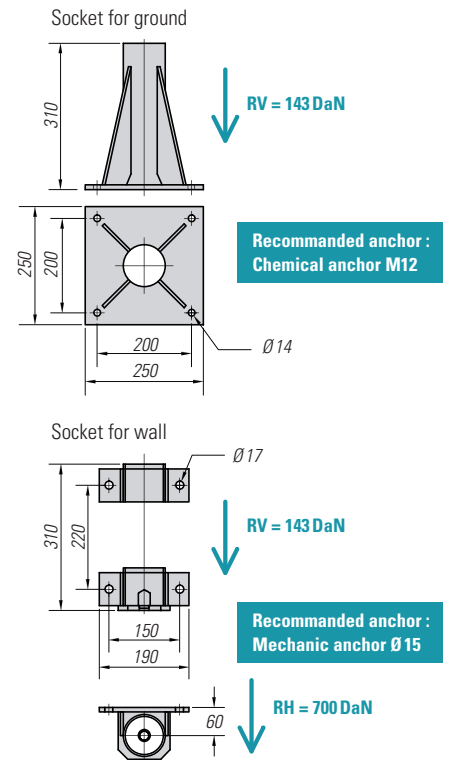


Measure in mm

Span	730	920	1110	1300
HA	1920	1984	2048	2112
HSF	2150	2214	2278	2342

Weight in Kg

Pillar	14
Deflection	12
Winch	13
Operating arm	6
Chemical socket	10
Wall socket	5



Description

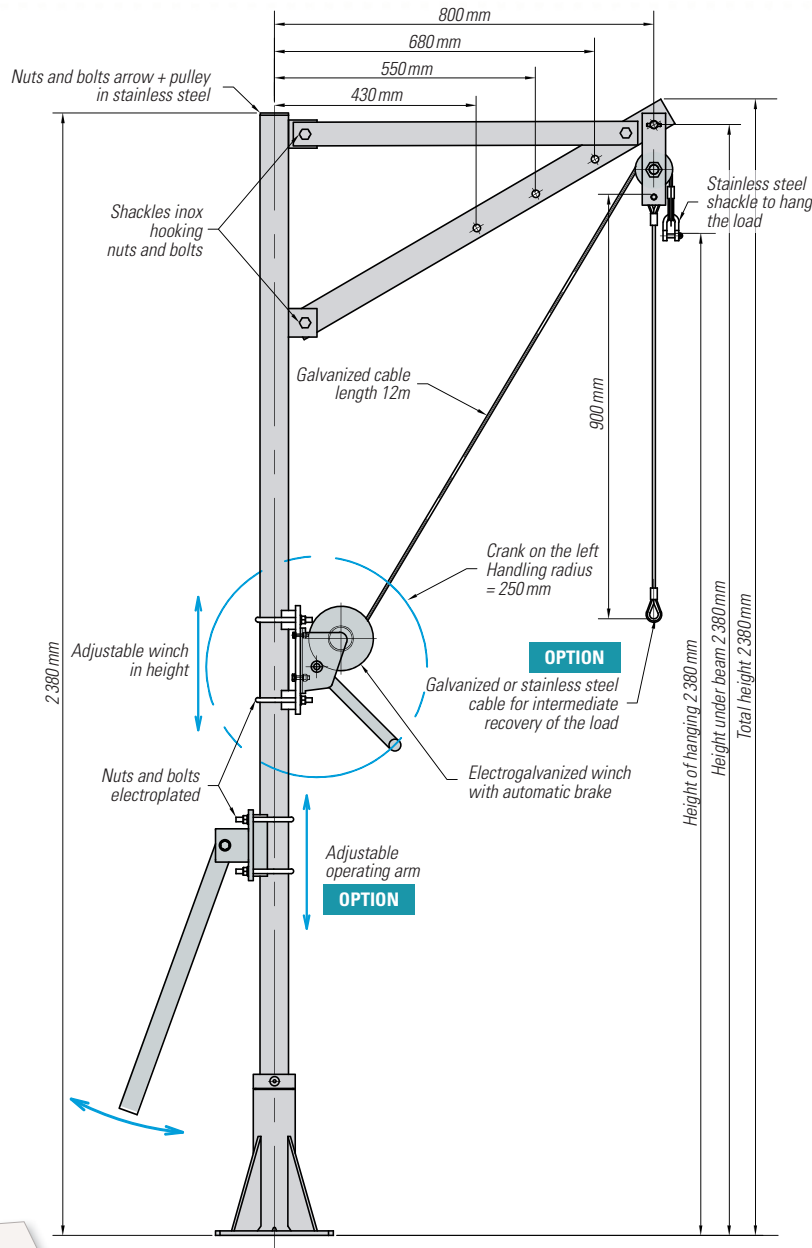
- Galvanized finish / Socket galvanized and painted.
- SWL = 75 DaN.
- Adjustable span from 730 mm to 1300 mm.
- Height of hooking at the shackle = 2112 mm.
- Stainless steel pulley mounted on bearing.
- Galvanized cable length 12m.
- Stainless steel shackle for long load attachment. 12m.
- Maximum moment = 154 DaN.m
- Reaction per anchor = 343 DaN.

OPTIONS

- › Operating arm.
- › Bolts winch and operating arms Stainless steel.
- › Cable Stainless steel.
- › Galvanized or stainless steel return sling.
- › Anchors.
- › RAL special paint for stainless steel.
- › Simplified version without winch with suspension for:
 - manual hoist,
 - electric hoist,
 - pneumatic hoist..
- › Manual winch electrogalvanized:
 - automatic load brake,
 - length per turn of the handle = 39 mm,
 - rollment capacity = 23 m / Ø cable = 5 mm,
 - crank force = 72 N.

PAA 150 / 0.8

STEEL DAVIT CRANE 150 KG

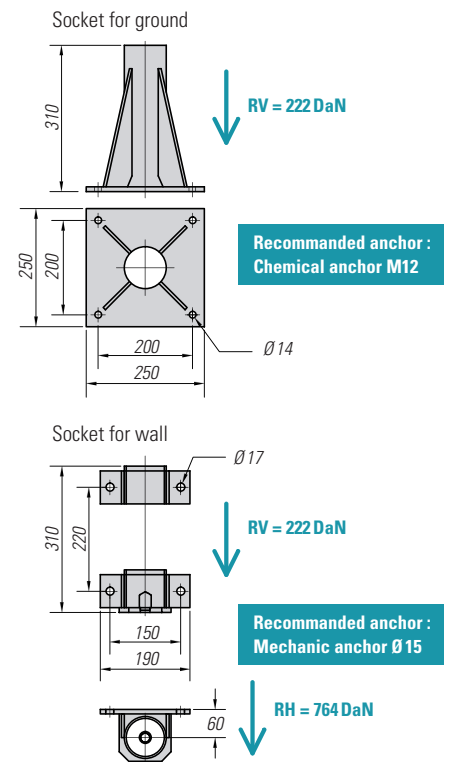


Measure in mm

Span	430	550	680	800
HA	1906	1979	2052	2125
HSF	2130	2210	2282	2355

Weight in Kg

Pillar	14
Deflection	9
Winch	13
Operating arm	6
Chemical socket	10
Wall socket	5



Description

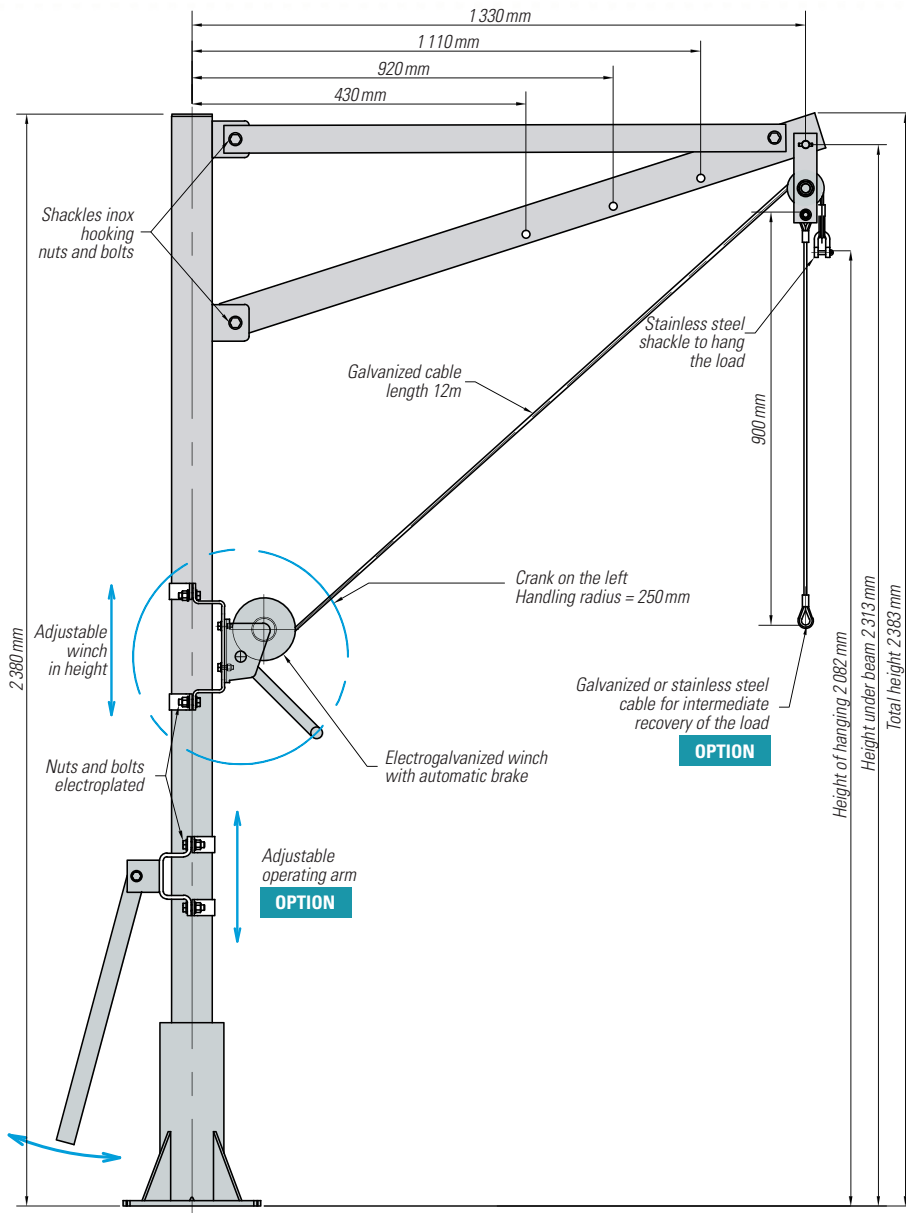
- Galvanized finish / Socket galvanized and painted.
- SWL = 150 DaN.
- Adjustable span from 430 mm to 800 mm.
- Height of hooking at the shackle = 2125 mm.
- Stainless steel pulley mounted on bearing.
- Galvanized cable length 12 m.
- Stainless steel shackle for long load attachment. 12 m.
- Maximum moment = 168 DaN.m
- Reaction per anchor = 374 DaN.

OPTIONS

- › Operating arm.
- › Bolts winch and operating arms Stainless steel.
- › Cable Stainless steel.
- › Galvanized or stainless steel return sling.
- › Anchors.
- › RAL special paint for stainless steel.
- › Simplified version without winch with suspension for:
 - manual hoist,
 - electric hoist,
 - pneumatic hoist..
- › Manual winch electrogalvanized:
 - automatic load brake,
 - length per turn of the handle = 39 mm,
 - rollment capacity = 23 m / Ø cable = 5 mm,
 - crank force = 72 N.

PAA 150 / 1.3

STEEL DAVIT CRANE 150 KG



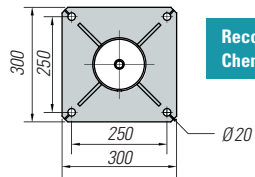
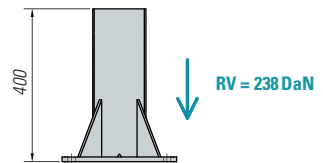
Measure in mm

Span	430	920	1110	1330
HA	1863	1936	2009	2082
HSF	2094	2167	2240	2313

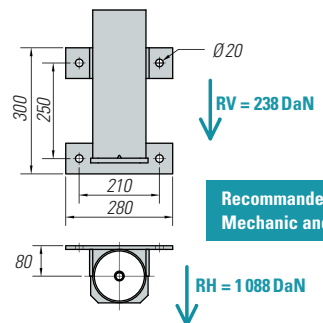
Weight in Kg

Pillar	22
Deflection	17
Winch	13
Operating arm	6
Chemical socket	15
Wall socket	12

Socket for ground



Socket for wall



Description

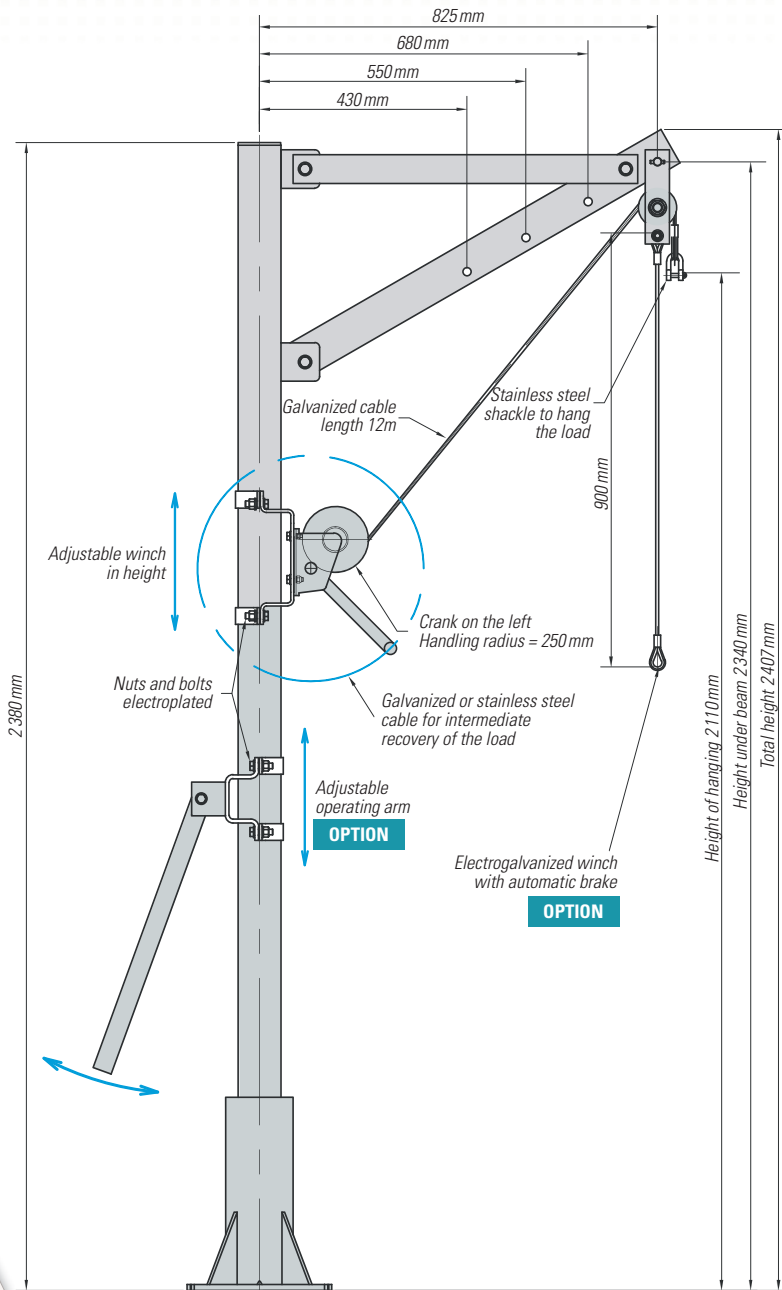
- Galvanized finish / Socket galvanized and painted.
- SWL = 150 DaN.
- Adjustable span from 730 mm to 1330 mm.
- Height of hooking at the shackle = 2082 mm.
- Stainless steel pulley mounted on bearing.
- Galvanized cable length 12m.
- Stainless steel shackle for long load attachment. 12m.
- Maximum moment = 272 DaN.m
- Reaction per anchor = 495 DaN.

OPTIONS

- › Operating arm.
- › Bolts winch and operating arms Stainless steel.
- › Cable Stainless steel.
- › Galvanized or stainless steel return sling.
- › Anchors.
- › RAL special paint for stainless steel.
- › Simplified version without winch with suspension for:
 - manual hoist,
 - electric hoist,
 - pneumatic hoist..
- › Manual winch electrogalvanized:
 - automatic load brake,
 - length per turn of the handle = 39 mm,
 - rollment capacity = 23 m / Ø cable = 5 mm,
 - crank force = 72 N.

PAA 250 / 0.8

STEEL DAVIT CRANE 250 KG



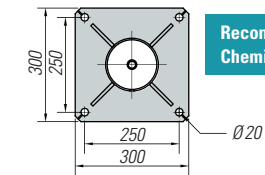
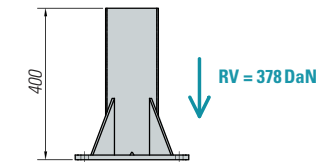
Measure in mm

Span	430	550	680	825
HA	1860	1940	2030	2110
HSF	2110	2180	2260	2340

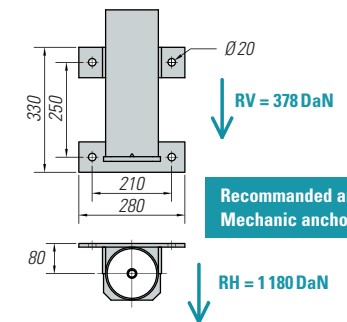
Weight in Kg

Pillar	22
Deflection	12
Winch	13
Operating arm	6
Chemical socket	15
Wall socket	12

Socket for ground



Socket for wall



Description

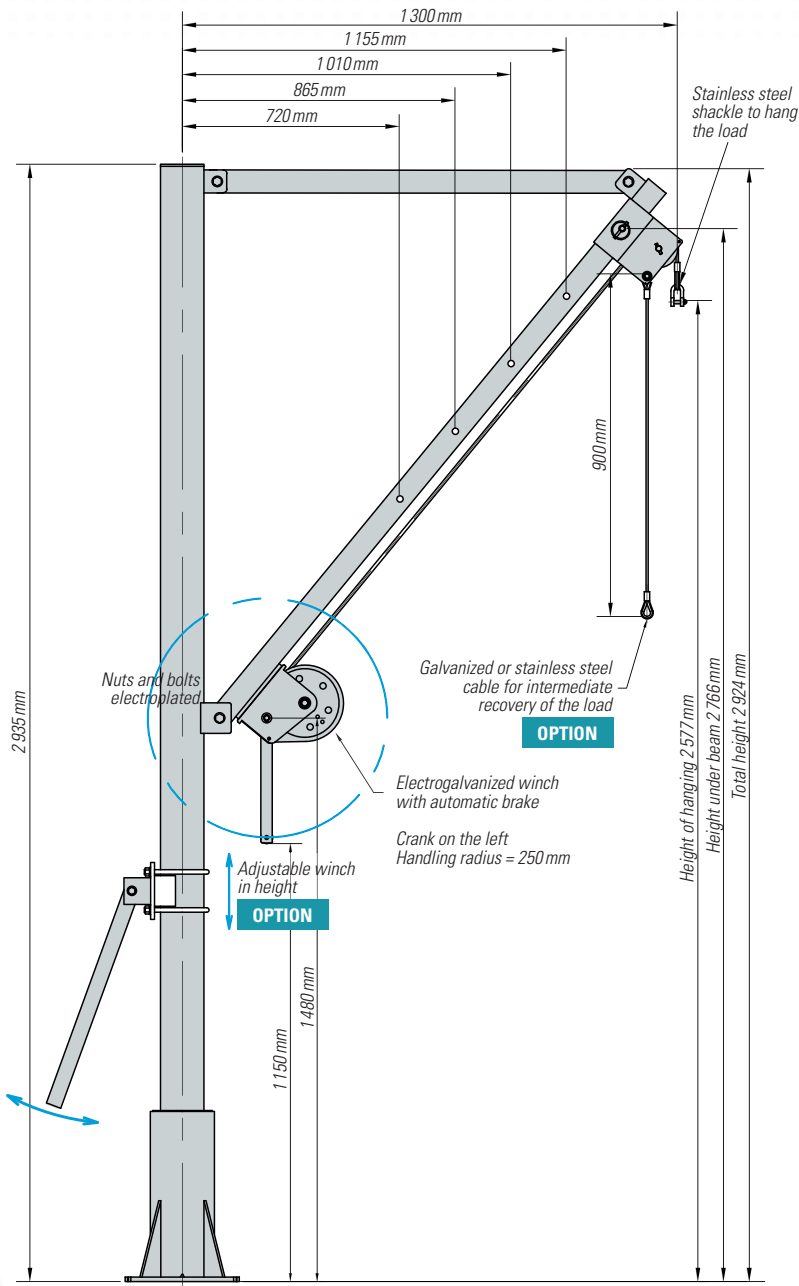
- Galvanized finish / Socket galvanized and painted.
- SWL = 250 DaN.
- Adjustable span from 430 mm to 825 mm.
- Height of hooking at the shackle = 2110 mm.
- Stainless steel pulley mounted on bearing.
- Galvanized cable length 12m.
- Stainless steel shackle for long load attachment. 12m.
- Maximum moment = 295 DaN.m
- Reaction per anchor = 597 DaN.

OPTIONS

- Operating arm.
- Bolts winch and operating arms Stainless steel.
- Cable Stainless steel.
- Galvanized or stainless steel return sling.
- Anchors.
- RAL special paint for stainless steel.
- Simplified version without winch with suspension for:
 - manual hoist,
 - electric hoist,
 - pneumatic hoist..
- Manual winch electrogalvanized:
 - automatic load brake,
 - length per turn of the handle = 39 mm,
 - rollment capacity = 23 m / Ø cable = 5 mm,
 - crank force = 72 N.

PAA 250 / 1.3

STEEL DAVIT CRANE 250 KG



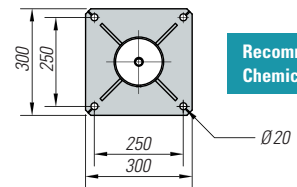
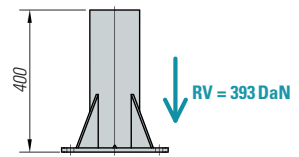
Measure in mm

Span	720	865	1010	1155	1300
HA	1865	2040	2220	2400	2577
HSF	2056	2230	2410	2590	2766

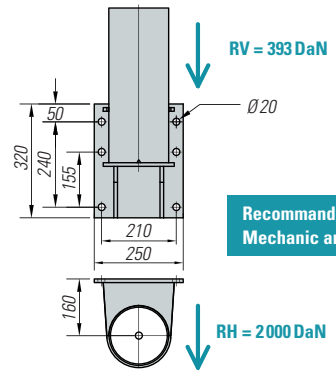
Weight in Kg

Pillar	25
Deflection	25
Winch	10
Operating arm	7
Chemical socket	18
Wall socket	22

Socket for ground



Socket for wall



Description

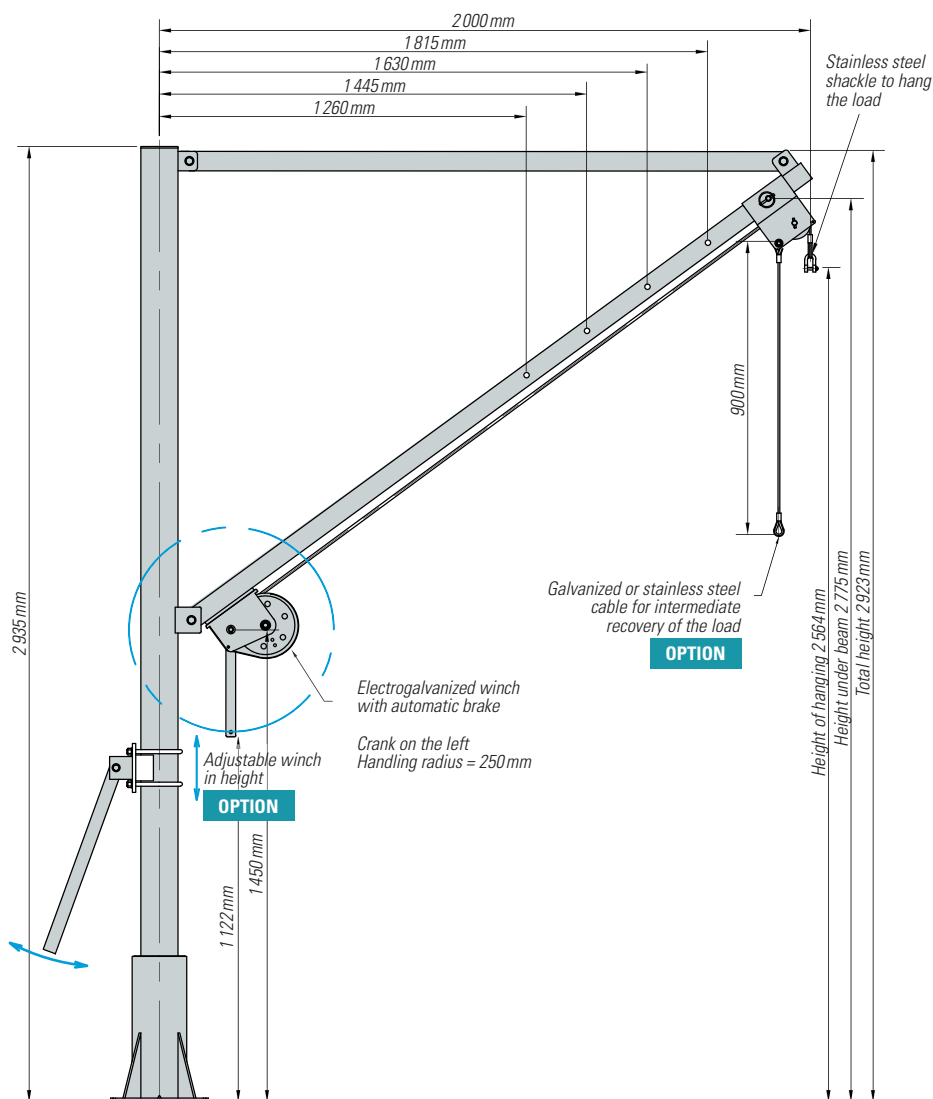
- Galvanized finish / Socket galvanized and painted.
- SWL = 250 DaN.
- Adjustable span from 720 mm to 1300 mm.
- Height of hooking at the shackle = 2577 mm.
- Stainless steel pulley mounted on bearing.
- Galvanized cable length 12 m.
- Stainless steel shackle for long load attachment. 12 m.
- Maximum moment = 480 DaN.m
- Reaction per anchor = 873 DaN.

OPTIONS

- Operating arm.
- Bolts winch and operating arms Stainless steel.
- Cable Stainless steel.
- Galvanized or stainless steel return sling.
- Anchors.
- RAL special paint for stainless steel.
- Simplified version without winch with suspension for:
 - manual hoist,
 - electric hoist,
 - pneumatic hoist..
- Manual winch electrogalvanized:
 - automatic load brake,
 - length per turn of the handle = 39 mm,
 - rollment capacity = 23 m / Ø cable = 5 mm,
 - crank force = 72 N.

PAA 250 / 2

STEEL DAVIT CRANE 250 KG

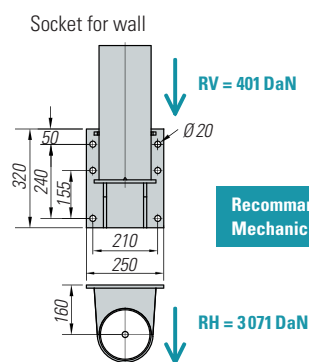
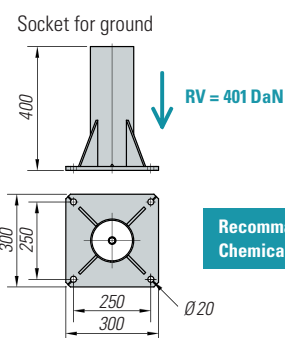


Measure in mm

Span	1260	1445	1630	1815	2000
HA	2020	2156	2292	2428	2564
HSF	2232	2368	2502	2640	2775

Weight in Kg

Pillar	25
Deflection	34
Winch	10
Operating arm	7
Chemical socket	18
Wall socket	22



Description

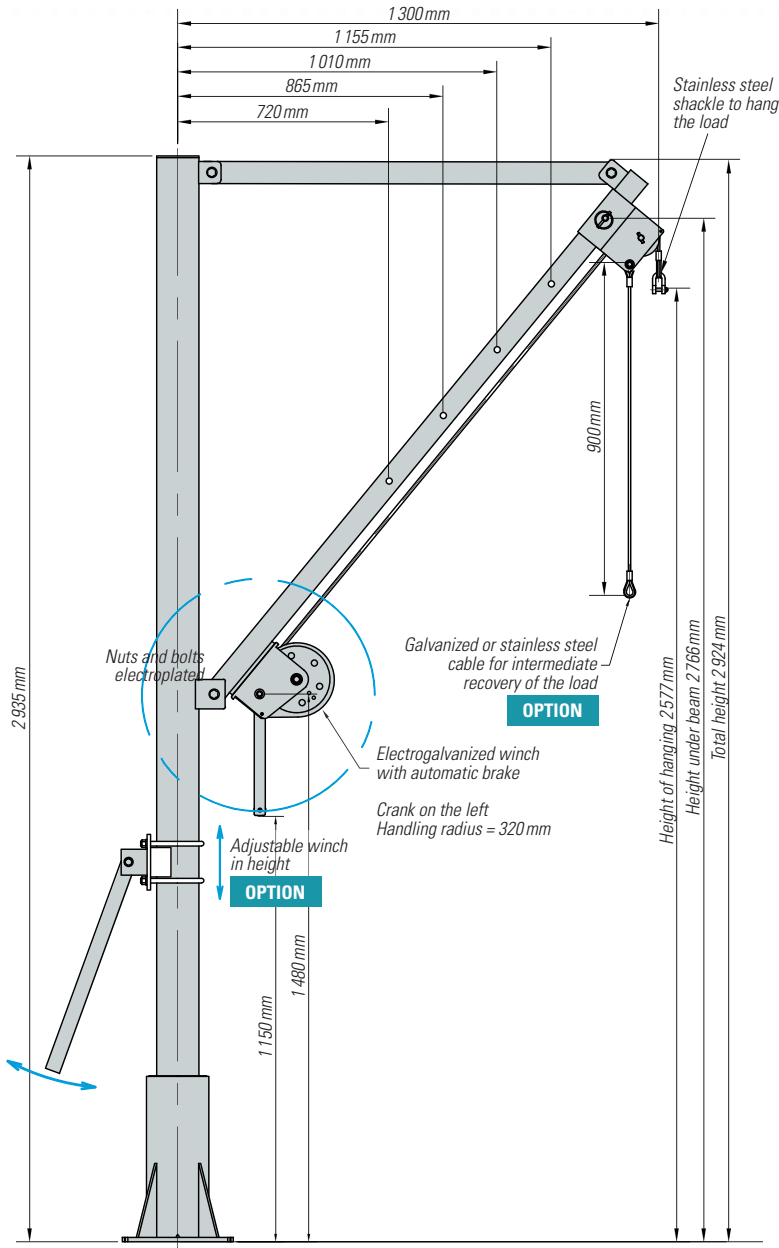
- Galvanized finish / Socket galvanized and painted.
- SWL = 250 DaN.
- Adjustable span from 1260 mm to 2000 mm.
- Height of hooking at the shackle = 2564 mm.
- Stainless steel pulley mounted on bearing.
- Galvanized cable length 12 m.
- Stainless steel shackle for long load attachment. 12 m.
- Maximum moment = 737 DaN.m
- Reaction per anchor = 1340 DaN.

OPTIONS

- › Operating arm.
- › Bolts winch and operating arms Stainless steel.
- › Cable Stainless steel.
- › Galvanized or stainless steel return sling.
- › Anchors.
- › RAL special paint for stainless steel.
- › Simplified version without winch with suspension for:
 - manual hoist,
 - electric hoist,
 - pneumatic hoist..
- › Manual winch electrogalvanized:
 - automatic load brake,
 - length per turn of the handle = 39 mm,
 - rollment capacity = 23 m / Ø cable = 5 mm,
 - crank force = 72 N.

PAA 500 / 1.3

STEEL DAVIT CRANE 500 KG



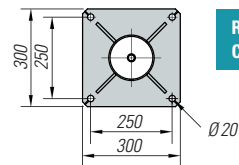
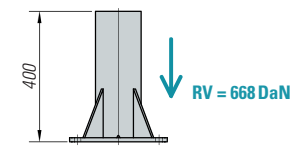
Measure in mm

Span	720	865	1010	1155	1300
HA	1865	2040	2220	2400	2577
HSF	2056	2230	2410	2590	2766

Weight in Kg

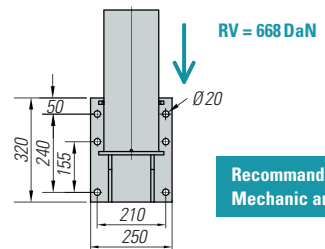
Pillar	25
Deflection	25
Winch	10
Operating arm	7
Chemical socket	18
Wall socket	22

Socket for ground



**Recommended anchor :
Chemical anchor M16**

Socket for wall



**Recommended anchor :
Mechanic anchor Ø 18**



Description

- Galvanized finish / Socket galvanized and painted.
- SWL = 500 DaN.
- Adjustable span from 720 mm to 1330 mm.
- Height of hooking at the shackle = 2577 mm.
- Stainless steel pulley mounted on bearing.
- Galvanized cable length 12 m.
- Stainless steel shackle for long load attachment. 12 m.
- Maximum moment = 873 DaN.m
- Reaction per anchor = 1588 DaN.

OPTIONS

- Operating arm.
- Bolts winch and operating arms Stainless steel.
- Cable Stainless steel.
- Galvanized or stainless steel return sling.
- Anchors.
- RAL special paint for stainless steel.
- Simplified version without winch with suspension for:
 - manual hoist,
 - electric hoist,
 - pneumatic hoist..
- Manual winch electrogalvanized:
 - automatic load brake,
 - length per turn of the handle = 39 mm,
 - rollment capacity = 23 m / Ø cable = 7 mm,
 - crank force = 72 N.