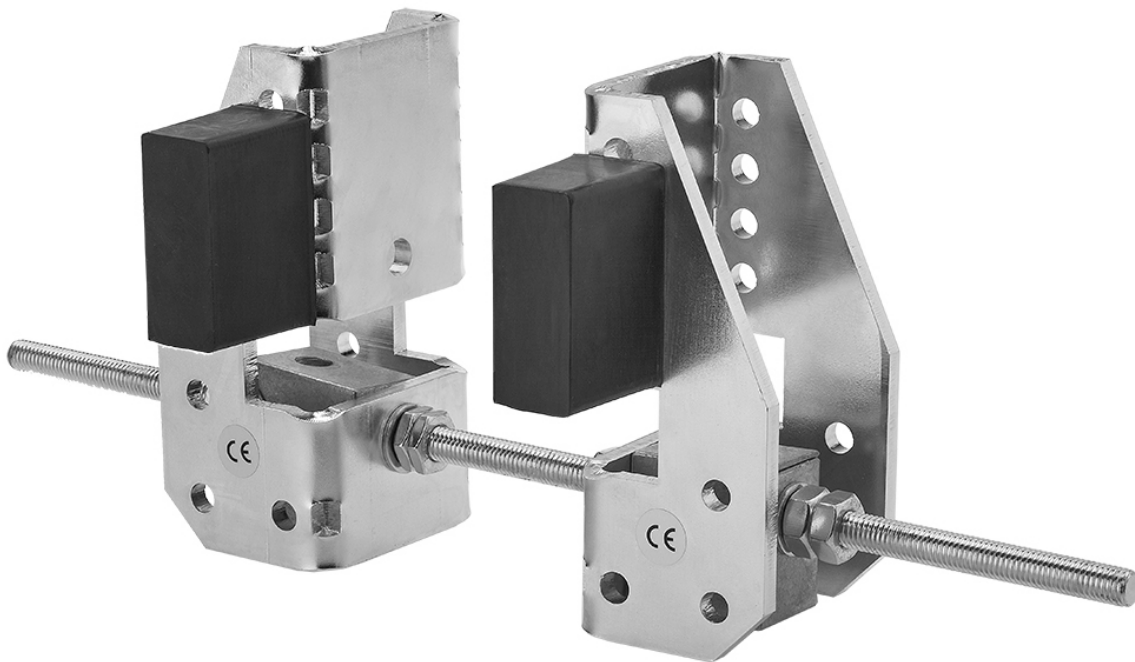


## TECHNICAL DATA SHEET

TROLLEY TRAVEL END STOPS

DHST.006



### DESCRIPTION

Trolley Travel End Stops are universal carriage limiters for: a) all manual and electrical trolleys up to 10,000kg and b) parallel flange profile beams with a flange thickness from 7 to 25 mm and beam widths from 82 to 300 mm.

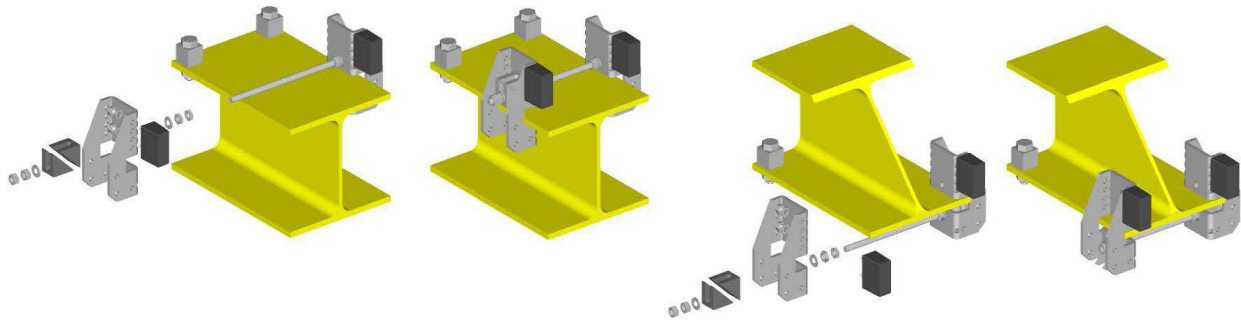
### FEATURES

- ☒ Universally applicable as an end stop or mobile limitation of the trolley.
- ☒ Easy and quick to install without drilling or welding.
- ☒ Suitable for all manual and electric trolleys up to 10,000kg.
- ☒ Suitable for most I- and H-beam profiles up to 25mm beam thickness
- ☒ Complies with the Machinery Directive 2006/42/EC. Supplied with CE declaration of conformity and assembly instructions.

# TECHNICAL DATA SHEET

TROLLEY TRAVEL END STOPS

DHST.006



## SPECIFICATIONS

PRODUCT CODE	SUITABLE BEAM WIDTH mm	NET WEIGHT kg	LENGTH OF THREADED ROD mm
DHST.006	82 - 300	2.5	370

HOIST CAPACITY kg	MAX PERMITTED WEIGHT OF HOISTING EQUIPMENT kg	MAX PERMITTED SPEED m/min
< 2000kg	160	25
2000kg	250	20
3000kg	250	20
4000kg	250	20
5000kg	400	20
6000kg	400	20
8000kg	900	16
10000kg	900	16

