

TECHNICAL DATA SHEET

SELF TIPPING BIN WITH POUR EDGE

STWB-P



DESCRIPTION

These self-tipping waste bins are designed for efficient waste handling across manufacturing, industrial, and construction environments. Suitable for use with a forklift or crane, they allow waste to be removed and tipped quickly and safely, reducing manual handling and improving on-site productivity.

Each bin is supplied with four crane lifting lugs, underside upending lugs, a fitted drain plug, and wheel brackets (Urethane Castors are optional). The stackable design minimises storage and transport space, while the galvanised finish ensures durability in demanding conditions. For forklift use, the operator simply hooks the bin feet over the tines and reverses slowly while lifting to initiate tipping.

FEATURES

- Working Load Limit 1500kg.
- Certified to AS/NZ1418.
- Manufactured strictly in accordance with AS 2359.1



09 263 7725 (Auckland)
03 222 2836 (Christchurch)



sales@stratalign.co.nz
www.stratalign.co.nz

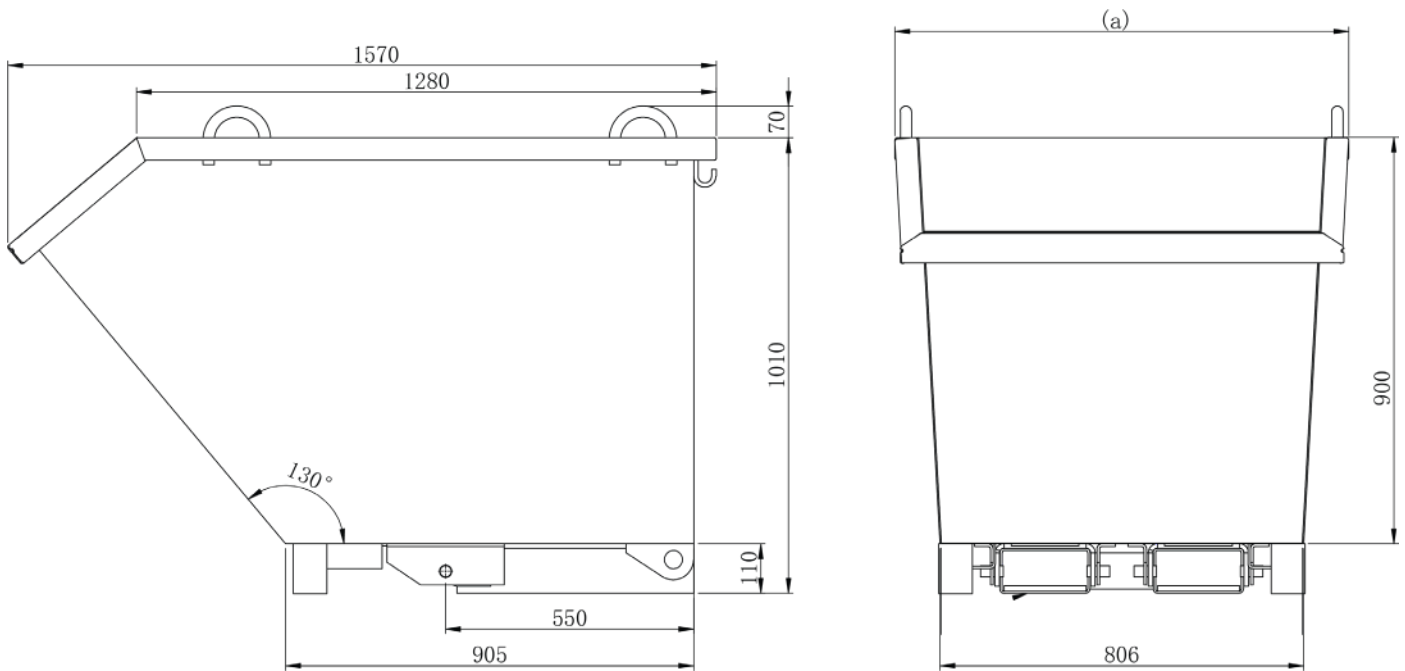


6 Harbour Ridge Drive,
Wiri, Auckland, 2104

TECHNICAL DATA SHEET

SELF TIPPING BIN WITH POUR EDGE

STWB-P



SPECIFICATIONS

PRODUCT CODE	CAPACITY (CUBIC/METER)	SIZE L x W x H (MM)	POCKET SIZE (MM)	POCKET CENTRES (MM)	UNIT WEIGHT (KG)
STWB-P9	0.95	1570 x 1010 (a) x 1010	185 x 75	360	164
STWB-P12	1.25	1570 x 1310 (a) x 1010	185 x 75	380	188
STWB-P15	1.55	1570 x 1510 (a) x 1010	185 x 75	680	235
STWB-P18	1.95	1570 x 1910 (a) x 1010	185 x 75	680	255

CERTIFICATION

Manufactured strictly in accordance with the following standards:

STANDARD	DESCRIPTION
AS 3990-1993	Structural Steel for mechanical engineering
AS 2359.1-1995	Powered Industrial Trucks
AS 1554	Structural Steel Welding