



STRATALIGN

INDUSTRIAL LIFTING & HOISTING SOLUTIONS

Short Tow Ball Jib 4500kg FJA-19-710

This tow ball jib attachment is designed to give increased lift height as the jibs profile is low. This is a general-purpose jib able to manoeuvre in confined spaces, with a 1.90m reach when fully extended. Being fitted with a tow ball also enables you to easily move around trailers around the yard.

Simply drive your fork tines through the pockets and secure the safety chain to the carriage. The tow ball jib overall length when closed is 1.25m. This comes in a galvanised finish and includes a manual/certificate, safety chain and swivel hook.

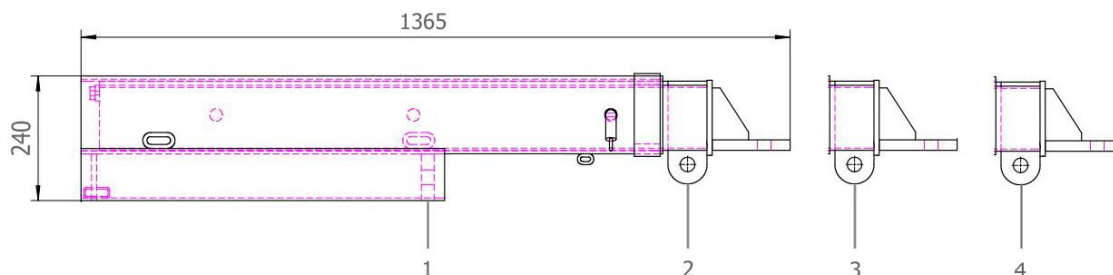
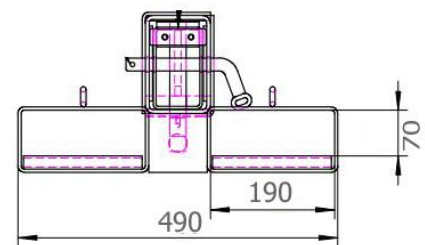
Manufactured strictly in accordance with AS 2359.1

Specs

- >Working Load Limit 4,500kg
- >Towing capacity of Tow Ball 2,000kg
- >4,500kg swivel hook and d-shackle supplied
- >50mm Tow Ball supplied
- >Pocket Size 185 x 68mm
- >Pocket Centres 290mm
- >Load Centre 670mm
- >Horizontal Centre of Gravity 735mm
- >Vertical Centre of Gravity 120mm
- >Unit Weight 120kg



Detail	Safe Working Load (SWL) Per Position			
Position	1	2	3	4
Extension [mm]	670	1165	1545	1925
SWL [kg]	4500	2900	1300	750



6 Harbour Ridge Drive, Wiri PO Box 97410, Manukau City 2241
Tel: 09 263 7725 Fax: 09 262 0970 Email: sales@stratalign.co.nz

OVERHEAD GANTRY CRANES, JIB CRANES, PORTABLE GANTRY CRANES, VACUUM LIFTERS, HOISTS, WINCHES, MAGNETIC CLAMPS, FORKLIFT & CRANE ATTACHMENTS