

## TECHNICAL DATA SHEET

### ROLL PRONG (SLIP-ON)

FJA-19-0XX



### DESCRIPTION

Very quick and easy to mount on forklifts, these slip-on roll prong attachments are designed to easily move rolled products such as fabric carpet cable and coil products on site. We recommend using large forklifts as the length of the prong extends the load centre a lot.

For simple and safe lifting, handling and transporting of rolled products, our roll prongs offer the perfect solution, and like all of our Forklift attachments, comes fully come certified.

### FEATURES

- For most standard fork tines.
- Safety Chain included to connect to forklift and prevent unintentional disengagement.
- Manufactured from high Tensile Steel.
- Load capacity: 1040mm
- Fork Pockets size: 190 x 65mm
- Painted finish.



09 263 7725 (Auckland)  
03 222 2836 (Christchurch)



sales@stratalign.co.nz  
www.stratalign.co.nz

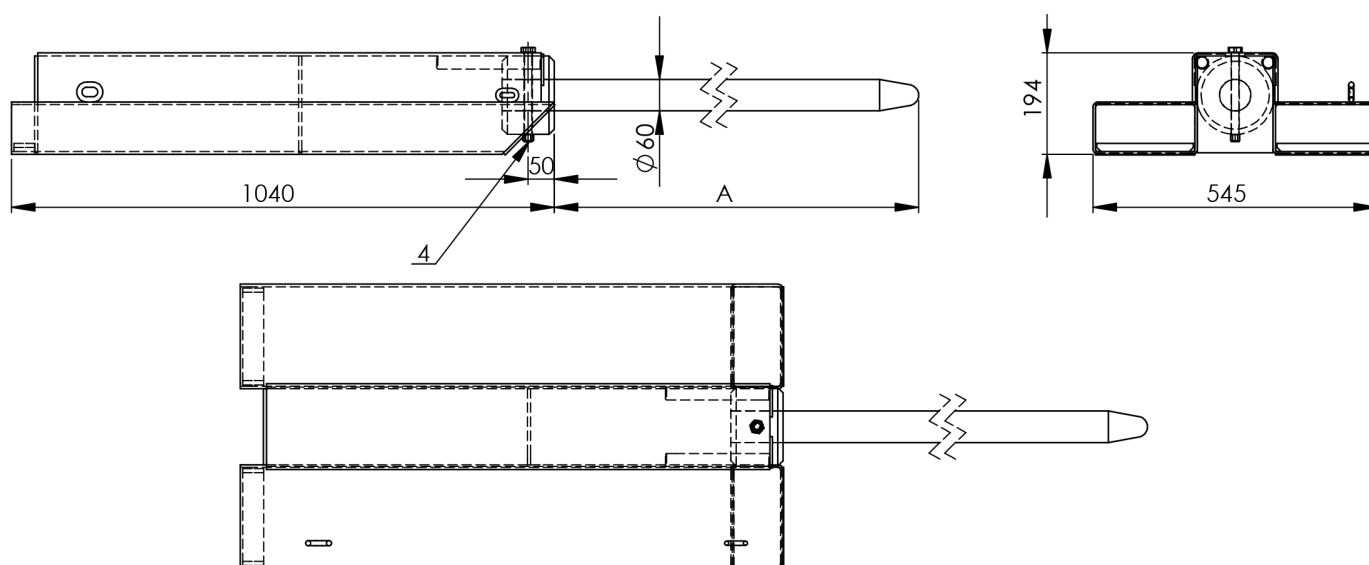


6 Harbour Ridge Drive,  
Wiri, Auckland, 2104

## TECHNICAL DATA SHEET

### ROLL PRONG (SLIP-ON)

FJA-19-0XX



### SPECIFICATIONS

PRODUCT CODE	OVERALL LENGTH (MM)	DIAMETER (MM)	WLL AT CENTRE OF PRONG (KG)	HORIZONTAL CENTRE OF GRAVITY	LOAD CENTRE (MM)	UNIT WEIGHT (KG)
FJA-19-060	2800	60	340	1395	1400	141
FJA-19-070	2800	70	510	1553	1400	163
FJA-19-080	2800	80	850	1670	1400	194

### CERTIFICATION

Manufactured strictly in accordance with the following standards:

STANDARD	DESCRIPTION
AS 3990	Structural Steel for Mechanical Engineering
AS 2359.1	Powered Industrial Trucks
AS 1554.1	Structural Steel Welding



09 263 7725 (Auckland)  
03 222 2836 (Christchurch)



sales@stratalign.co.nz  
www.stratalign.co.nz



6 Harbour Ridge Drive,  
Wiri, Auckland, 2104